



A DIVISION OF CLARKE-GRAVELY CORPORATION

To continue its program of quality and design improvement, the manufacturer reserves the right to change specifications, design or prices without notice and without incurring obligation.

Technical Information

TECHNICAL SERVICE BULLETIN – 1479

TO: ALL GRAVELY OUTLETS

DATE: JULY 15, 1974

SUBJECT: CHANGE IN 7.6 TRACTOR P.T.O.

Enclosed is an illustrated parts list of the recent change on the P.T.O. of the 7.6 Tractor. The change is effective on all tractors with the serial number 109700 and above.

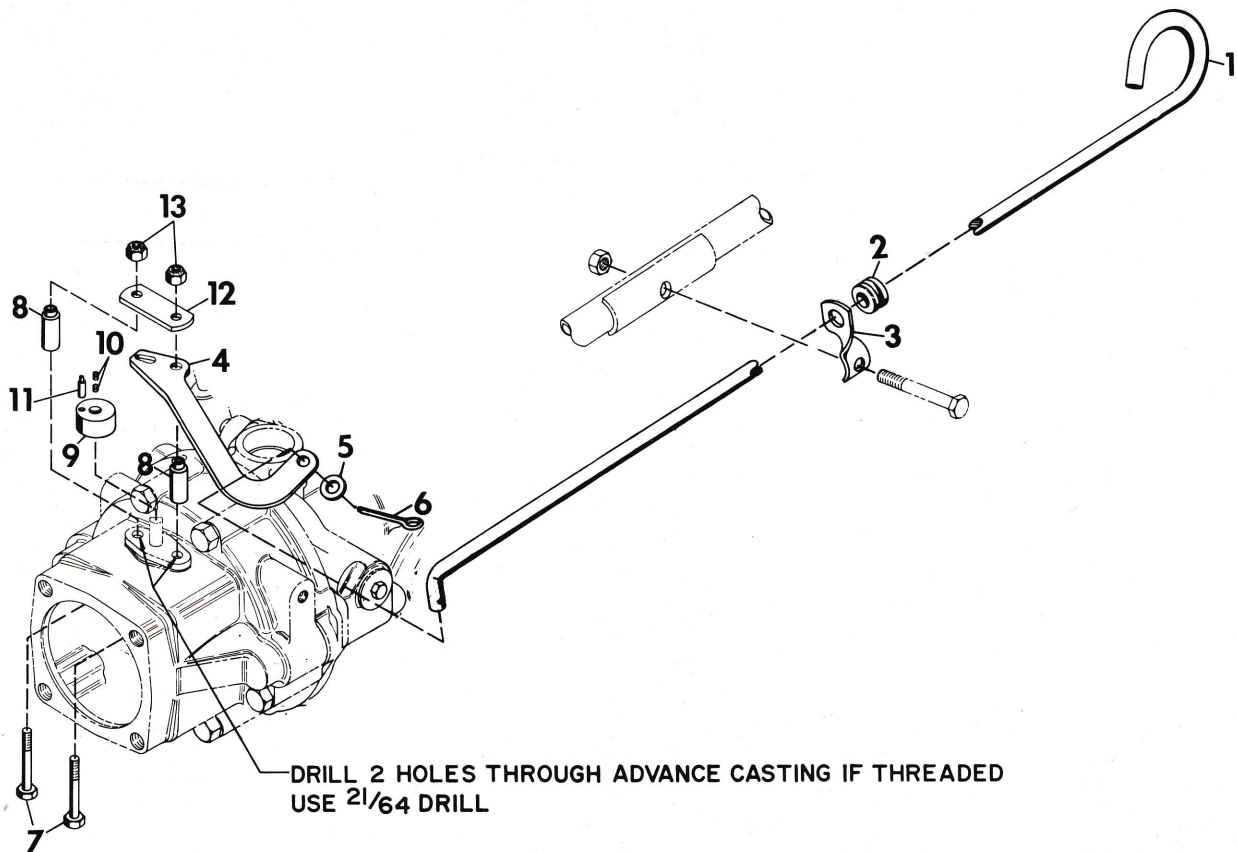
Note Item 7 is a new part number, as longer bolts are required. Also, two item number 8's, are now being used.

The main change is the addition of item number 12, spacer strap, over the top of the shifter arm.

M. H. Lance, Manager
Customer Service Department

MHL/bh

Attachments



<u>ITEM NO.</u>	<u>PART NO.</u>	<u>DESCRIPTION</u>
1	12323P1	Rod, Shifter
2	12325P1	Grommet, Shifter
3	12324P1	Clevis, Shifter Rod
4	12321P1	Arm, Shifter
5	120394	Washer, Flat 13/32 x 13/16 x .065
6	121222	Pin, Cotter 3/32 x .75
7	180091	Bolt, Hex 5/16-18 x 2-1/2
8	12322P1	Spacer, .343 x .562 x 1.080
9	12319P1	Body, Shifter
10	102591	Screw, Set 3/8-16 x 1/4 Hex Socket
11	12320P1	Dowel, Shifter Body
12	20822P1	Spacer, Strap
13	9419455	Nut, Lock 5/16-18 Washer Insert Hex